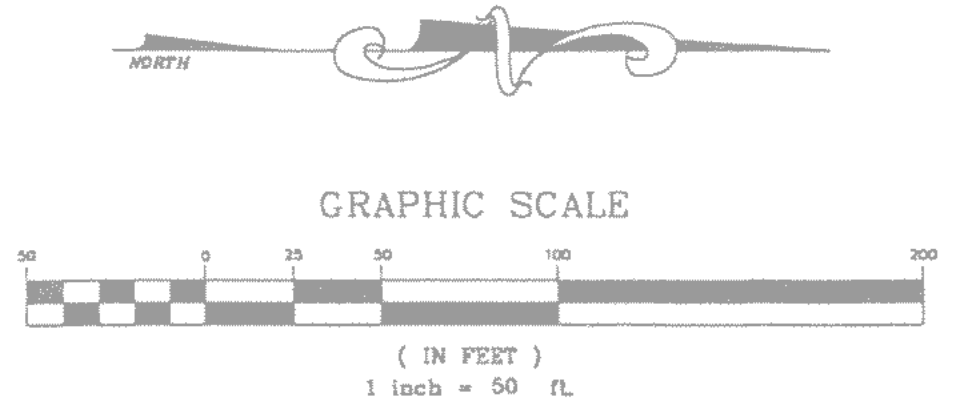
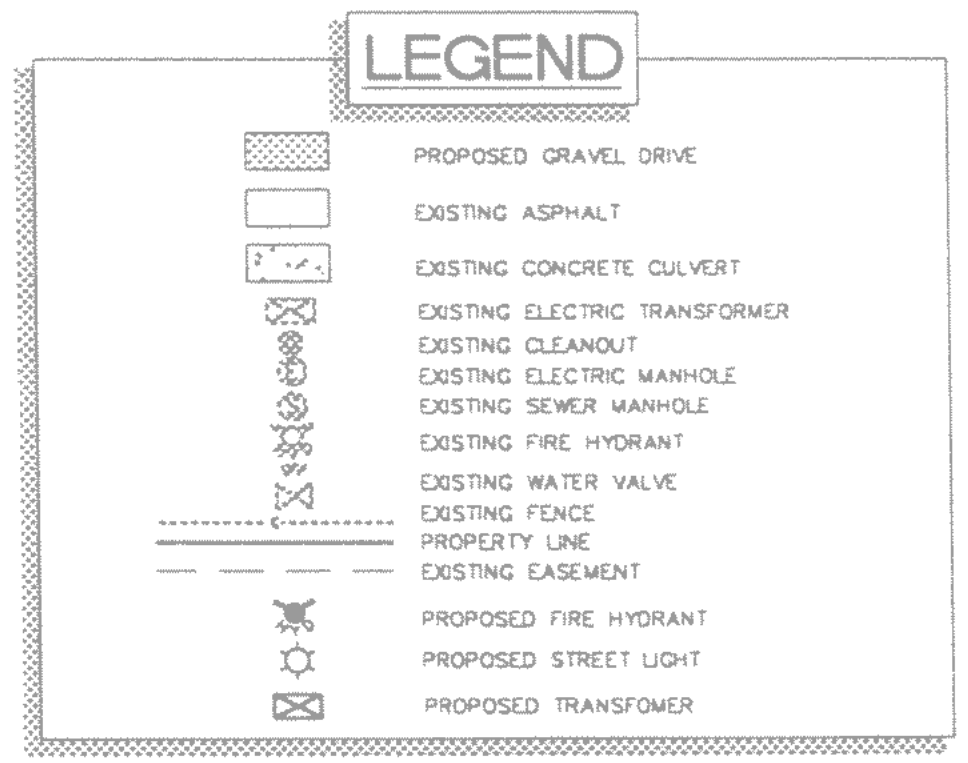
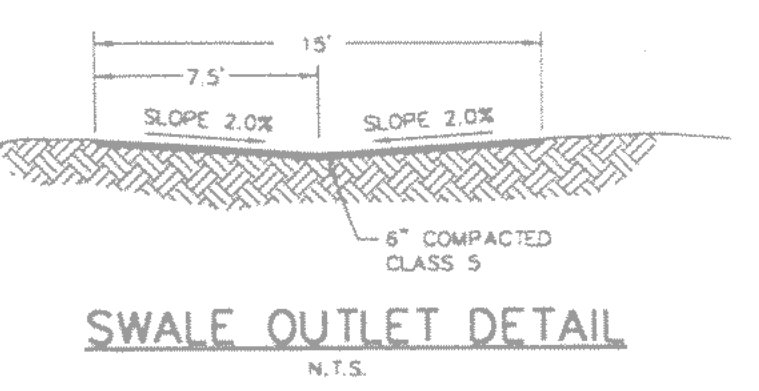
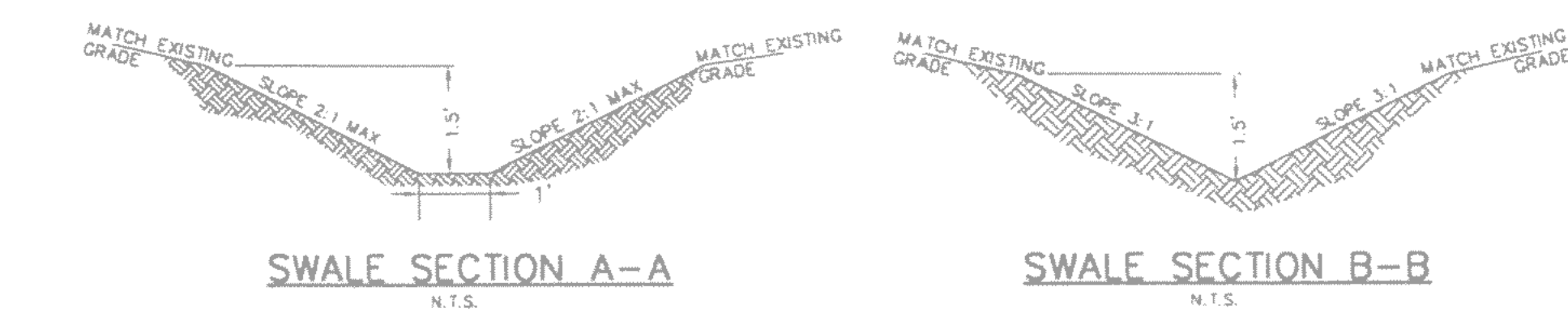
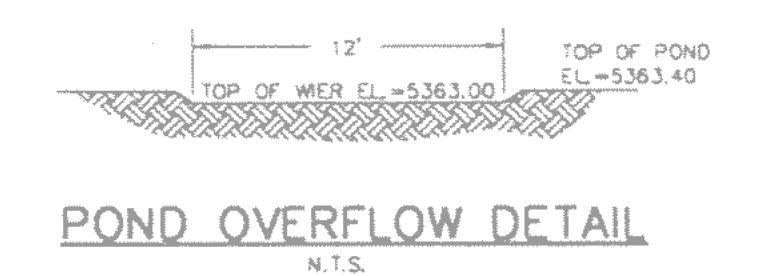
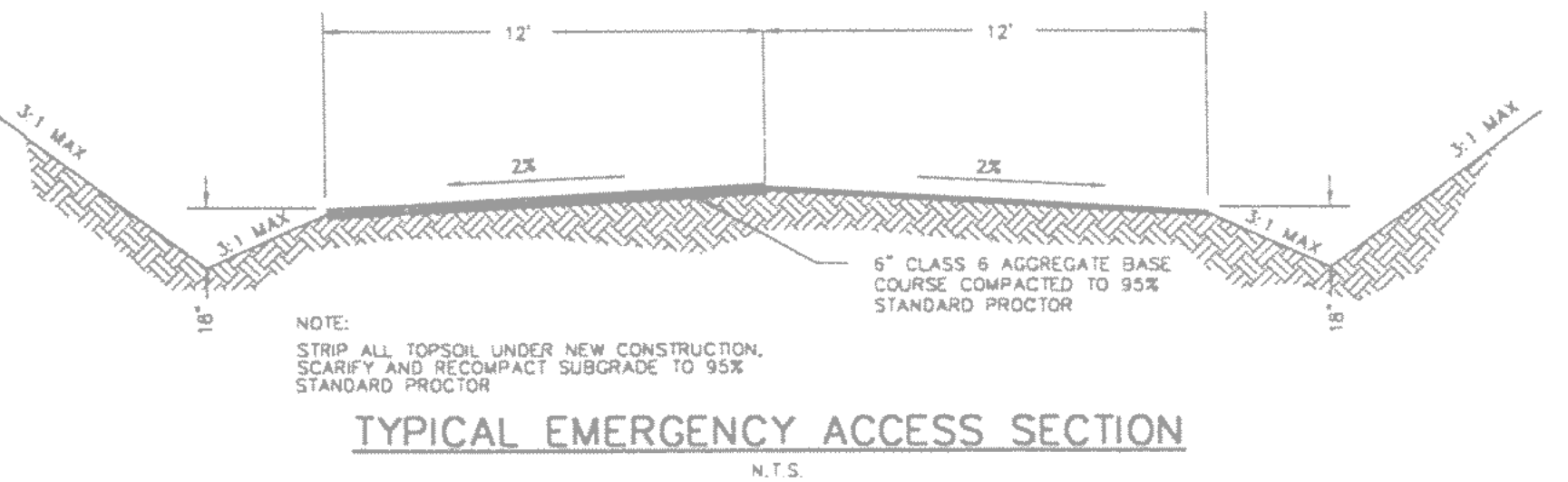
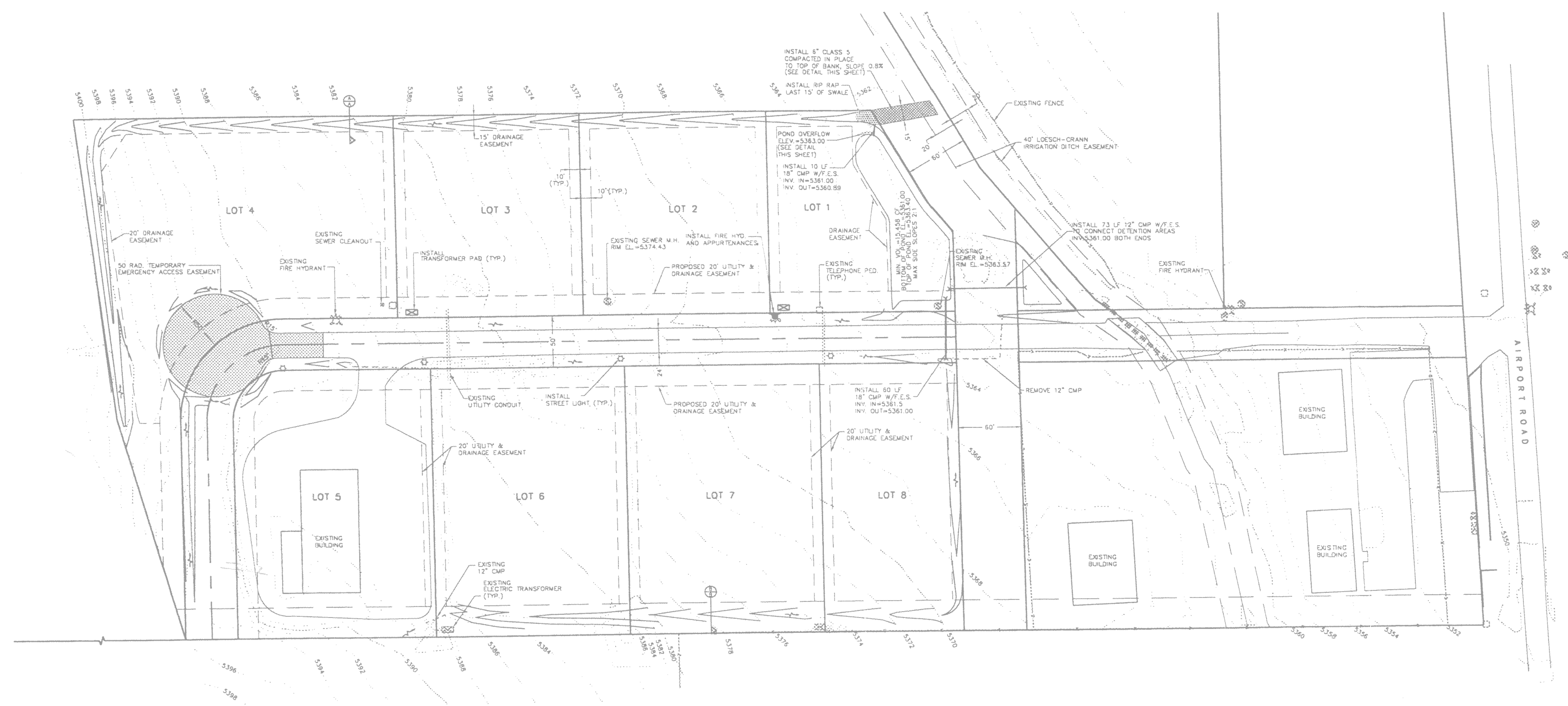


11/1999 99055A-313 report available 7 days. Sheet: Job, 24 Jan 2006 2:39pm. Plot/Print: Wed, 25 Jan 2006 11:00am. jmmason



DES.	CRB	NO.	DATE	REVISION	BY
DR.	CRB				
CK.	VDH				
DATE	5/3/99				
FILE	SP-01				

HIGH COUNTRY ENGINEERING, INC.
 923 COOPER AVENUE, #1601
 GLENWOOD SPRINGS, CO 81601
 PH: (970) 945-8878 FAX: (970) 945-2555

ALASKA LEASING, L.L.C.
 RIFLE, COLORADO
BUCKHORN BUSINESS PARK
 SITE, GRADING, and DRAINAGE PLAN

PROJECT NO.
 98092.01

SHEET
 2

**PRELIMINARY
 NOT
 FOR
 CONSTRUCTION**



SCHMUESER GORDON MEYER
 118 W. 6TH STREET, SUITE 200
 GLENWOOD SPRINGS, COLORADO 81601
 (970) 945-1004 FAX (970) 945-5948
 ASPEN, COLORADO (970) 925-6727
 CRESTED BUTTE, CO (970) 349-5355
 E-mail: engineer@sgm-inc.com

CITY OF RIFLE
SOUTH RIFLE DRAINAGE

NUM-BER	REVISION	DATE	BY

Figure 7-1
Buckhorn Drainage
and Grading

Job No. 99055a-313
 Drawn by: jss
 Date: AUGUST 2005
 OC: PE: JSS
 File: 99055a-313BM

1
 OF 1

COPYRIGHT 2005 SGM, INC.