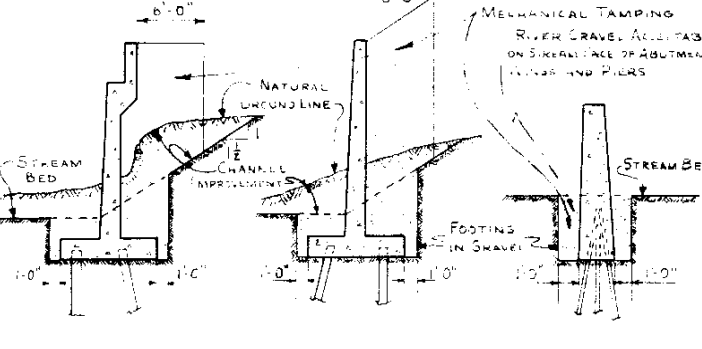
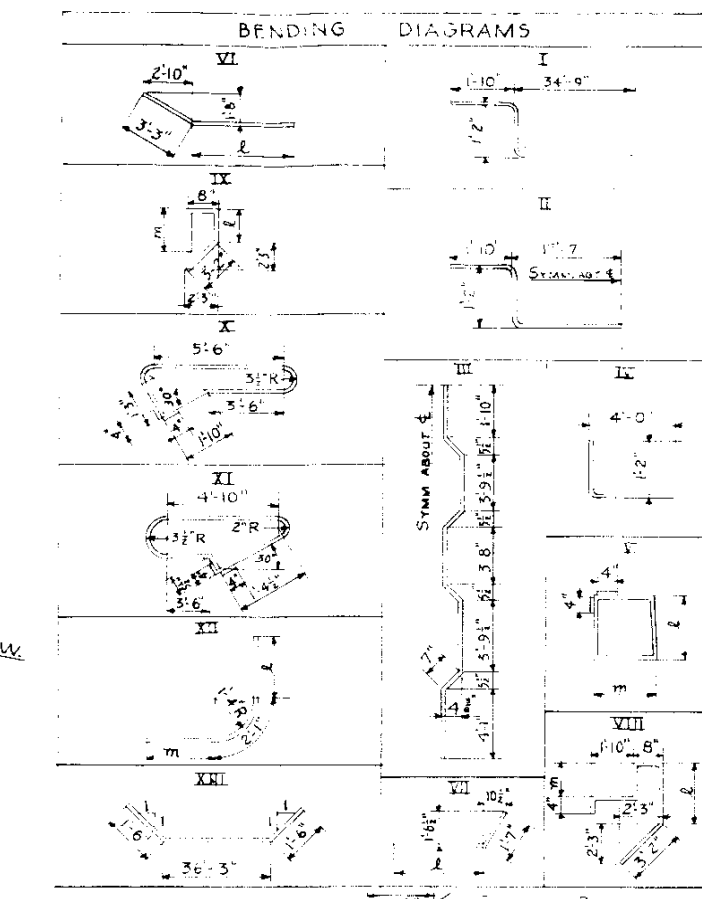
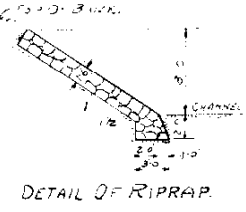


NO.	REFERENCE DRAWINGS
9	GENERAL LAYOUT & SUMMARY OF QUANTITIES
10	DETAILS OF SUPERSTRUCTURE
11	DETAILS OF SUPERSTRUCTURE
12	ABUTMENT NO.1 AND PIER NO.2 AND NO.3
13	ABUTMENT NO.4



ABUTMENT WING PIER
STRUCTURE BACKFILL & MECHANICAL TAMING DIAGRAMS

SUMMARY OF QUANTITIES					ABN
ITEM	DESCRIPTION	UNIT	SUPERSTR.	ABUT. NO.1, PIER NO.2, PIER NO.3, ABUT. NO.4,	%
14a	DRY ROCK EXCAVATION (STR)	CU YD			5
14b	DRY COMMON EXCAVATION (STR)	CU YD			200
14c	WET ROCK EXCAVATION (STR)	CU YD			5
14d	WET COMMON EXCAVATION (STR)	CU YD			350
16a	STRUCTURE BACKFILL	CU YD	160	10	20
16c	MECHANICAL TAMING	HR	37	1	10
42c	UNTREATED BRIDGE TIMBER	M FT 6M	0.210		
40a	CLASS A CONCRETE	CU YD	135	131	51
47	REINFORCING STEEL	LB	20560	1700	1570
60A	STRUCTURAL STEEL (INCL. 1% OVERRUN)	LB	126000	59	300
60B	TREATED TIMBER PILING	LIN. FT.	887		
60C	METAL PILE SHOES	EACH	44		
61c	STEEL PILING (10" BP @ 42")	LIN. FT.		250	250
69D	DRAIN PIPE (CONC. FLOOR) 4" DIA. 2'-0"	EA	18		
18a	STATION YARD OVERHAUL	STA YD			2970
18b	YARD MILE OVERHAUL	YD MI			11.67
*	EXPN JOINT MATERIAL	SQ FT.	40		40
*	EXPN JOINT MATERIAL	SQ FT.		32	40
*	EXPN JOINT MATERIAL	SQ FT.	35		35
*	16 GA. GALV. SHEET METAL	SQ FT.	65		65
67a	RIPRAP	CU YD		255	255

* TO BE INCLUDED IN BID PRICE FOR CLASS "A" CONCRETE.

REV STATIONS AND GRADES BAR SUMMARY EUS. 11452
CHANGED LOCATION OF STREAM. JWB. 4-2-53

ABUT. NO.1 BAR LIST				ABUT. NO.4 BAR LIST			
MARK	SIZE	NO. REQD.	LENGTH TYPE-DIMENSIONS	MARK	SIZE	NO. REQD.	LENGTH TYPE-DIMENSIONS
406	1/2"	12	40'-0" STR	445	1/2"	2	40'-0" STR
407	1/2"	2	26'-0" STR	446	1/2"	2	28'-0" STR
408	1/2"	2	26'-6" STR	449	1/2"	2	31'-9" STR
409	1/2"	2	27'-6" STR	451	1/2"	2	32'-6" STR
410	1/2"	2	28'-3" STR	452	1/2"	2	10'-0" STR
411	1/2"	2	24'-0" STR	453	1/2"	2	17'-9" STR
412	1/2"	2	30'-0" STR	454	1/2"	2	19'-6" STR
413	1/2"	2	15'-0" STR	455	1/2"	2	21'-6" STR
414	1/2"	2	16'-9" STR	456	1/2"	2	23'-0" STR
415	1/2"	2	18'-9" STR	457	1/2"	2	24'-9" STR
416	1/2"	2	20'-6" STR	458	1/2"	11	25'-3" STR
417	1/2"	2	21'-6" STR	459	1/2"	11	25'-4" STR
418	1/2"	2	22'-9" STR	460	1/2"	1	25'-3" STR
419	1/2"	9	25'-0" STR	461	1/2"	1	23'-7" STR
420	1/2"	9	25'-3" STR	462	1/2"	18	24'-0" STR
421	1/2"	22	23'-6" STR	463	1/2"	1	6'-0" STR
422	3/8"	36	14'-0" STR	464	1/2"	1	5'-6" STR
423	1/2"	8	17'-6" STR	465	1/2"	2	6'-6" STR
424	1/2"	3	16'-4" STR	466	1/2"	35	13'-11" STR
425	1/2"	2	14'-3" STR	467	1/2"	9	17'-5" STR
426	1/2"	2	11'-10" STR	468	1/2"	4	16'-3" STR
427	1/2"	10	22'-2" STR	469	1/2"	11	24'-8" STR
428	1/2"	1	8'-0" STR	470	1/2"	1	20'-11" STR
429	1/2"	1	15'-2" STR	471	1/2"	1	12'-11" STR
432	1/2"	10	13'-2" STR	472	1/2"	1	14'-2" STR
433	1/2"	10	13'-2" STR	473	1/2"	1	12'-11" STR
434	1/2"	1	11'-2" STR	474	1/2"	1	11'-2" STR
438	1/2"	1	2'-0" STR	475	1/2"	1	14'-2" STR
510	3/8"	127	5'-10" STR	476	1/2"	1	12'-11" STR
511	3/8"	11	7'-5" STR	477	1/2"	1	11'-2" STR
512	3/8"	7	7'-7" STR	478	1/2"	1	14'-2" STR
513	3/8"	37	8'-6" STR	479	1/2"	1	12'-11" STR
514	3/8"	59	7'-6" STR	480	1/2"	1	11'-2" STR
601	1/2"	7	7'-6" STR	481	1/2"	1	14'-2" STR
602	1/2"	7	9'-9" STR	482	1/2"	1	11'-2" STR
603	1/2"	4	7'-1" STR	483	1/2"	1	14'-2" STR
604	1/2"	4	9'-8" STR	484	1/2"	1	11'-2" STR
701	1/2"	49	9'-1" STR	485	1/2"	1	14'-2" STR
702	1/2"	52	16'-0" STR	486	1/2"	1	11'-2" STR
703	1/2"	4	20'-9" STR	487	1/2"	1	14'-2" STR
704	1/2"	7	8'-0" STR	488	1/2"	1	11'-2" STR
705	1/2"	11	11'-10" STR	489	1/2"	1	14'-2" STR
706	1/2"	4	8'-4" STR	490	1/2"	1	11'-2" STR
801	1/2"	3	8'-5" STR	491	1/2"	1	14'-2" STR
802	1/2"	3	3'-1" STR	492	1/2"	1	11'-2" STR
803	1/2"	2	8'-9" STR	493	1/2"	1	14'-2" STR
804	1/2"	2	12'-9" STR	494	1/2"	1	11'-2" STR

SUPERSTRUCTURE BAR LIST			
MARK	SIZE	NO. REQD.	LENGTH TYPE-DIMENSIONS
401	1/2"	72	3'-9" STR
402	1/2"	204	25'-0" STR
403	1/2"	102	29'-9" STR
501	3/8"	2	34'-6" STR
502	3/8"	1	36'-8" STR
503	3/8"	1	37'-7" STR
504	3/8"	116	38'-0" STR
505	3/8"	116	40'-10" STR
506	3/8"	115	39'-0" STR
507	3/8"	72	5'-1" STR

SUMMARY SUPERSTRUCTURE			
8405	LIN. FT.	1/2" @ 0.668 LBS./LIN. FT.	5615 LBS.
14139	LIN. FT.	3/8" @ 1.043 LBS./LIN. FT.	14747 LBS.
		PLUS 1% OVERRUN	198 LBS.
		TOTAL	20560 LBS.

PIER NO.2 OR NO.3 BAR LIST			
MARK	SIZE	NO. REQD.	LENGTH TYPE-DIMENSIONS
442	1/2"	24	39'-3" STR
515	3/8"	76	11'-8" STR

SUMMARY PIER NO.2 OR PIER NO.3			
942	LIN. FT.	1/2" @ 0.668 LBS./LIN. FT.	629 LBS.
887	LIN. FT.	3/8" @ 1.043 LBS./LIN. FT.	925 LBS.
		PLUS 1% OVERRUN	16 LBS.
		TOTAL PIER NO.2	1570 LBS.
		TOTAL PIER NO.3	1570 LBS.

SUMMARY ABUT. NO.1			
4178	LIN. FT.	1/2" @ 0.668 LBS./LIN. FT.	2123 LBS.
1432	LIN. FT.	3/8" @ 1.043 LBS./LIN. FT.	1703 LBS.
188	LIN. FT.	1/2" @ 1.502 LBS./LIN. FT.	282 LBS.
1580	LIN. FT.	3/8" @ 2.044 LBS./LIN. FT.	3230 LBS.
108	LIN. FT.	1/2" @ 2.670 LBS./LIN. FT.	289 LBS.
		PLUS 1% OVERRUN	73 LBS.
		TOTAL	7700 LBS.

SUMMARY ABUT. NO.4			
3436	LIN. FT.	1/2" @ 0.668 LBS./LIN. FT.	2295 LBS.
2232	LIN. FT.	3/8" @ 1.043 LBS./LIN. FT.	2328 LBS.
160	LIN. FT.	1/2" @ 1.502 LBS./LIN. FT.	240 LBS.
1850	LIN. FT.	3/8" @ 2.044 LBS./LIN. FT.	3781 LBS.
194	LIN. FT.	1/2" @ 2.670 LBS./LIN. FT.	519 LBS.
		PLUS 1% OVERRUN	87 LBS.
		TOTAL	9250 LBS.

GENERAL NOTES

ALL CONCRETE SURFACES EXPOSED TO VIEW SHALL RECEIVE CLASS "1" SURFACE FINISH, EXCEPT UNDERLIEF OF FLOOR SLAB AND ABUTMENT FACES BEHIND STRUCTURE.

MANHOLE BOLTS SHALL HAVE HEX HEADS AND NUTS WITH LOCK WASHERS UNLESS OTHERWISE SPECIFIED.

ALL STRUCTURAL STEEL SHALL RECEIVE ONE SHOP COATING OF CHROMATE AND TWO FIELD COATS OF ALUMINUM PAINT.

THE FOLLOWING REQUIREMENTS FOR ALL TREATED TIMBER AND PILING SHALL BE FEROSE OIL.

CONTRACTORS ATTENTION IS CALLED TO SPECIFICATIONS COVERING MECHANICAL TAMING; EARTH SHALL BE PLACED IN 6" LAYERS.

MECHANICAL TAMING OF EACH LAYER SHALL START ALONG WALL AND CONTINUE AWAY FROM WALL, ABOVE THE ORIGINAL GROUND LINE.

MECHANICAL TAMING SHALL BE DONE TO A DISTANCE OF 6 FEET FROM THE WALL, SEE STRUCTURE BACKFILL DIAGRAM.

THE STANDARD SPECIFICATIONS FOR BRIDGE CONSTRUCTION, 1952 EDITION, SHALL BE USED AS SPECIFIED.

ALL REINFORCING BARS SHALL BE PLACED AS SPECIFIED.

ALL REINFORCING BARS SHALL BE PLACED AS SPECIFIED.

ALL REINFORCING BARS SHALL BE PLACED AS SPECIFIED.

ALL RIVETS TO BE 3/4" DIA. ALL RIVETS TO BE POWER DRIVEN.

SECONDARY BARS WHEN SPICED SHALL BE GIVEN A LAP OF 20 DIAMETERS.

REINFORCING STEEL BARS SHALL CONFORM TO A.S.T.M. SPECIFICATIONS.

A 505-50T OR LATEST REVISION THEREOF.

ROLLING EQUIPMENT SHALL NOT BE USED WITHIN 6 FEET OF WALL.

COLORADO STATE HIGHWAY DEPARTMENT

3 SPAN (48'-59'-48") CONTINUOUS CONCRETE T BEAM BRIDGE 30' ROADWAY 60' SKEW

GENERAL LAYOUT, NOTES & SUMMARY

Across RIFE CREEK

Sta. 6+50.00 TO 8+09.48

Near RIFE Sec. 16 T.6S R.93W

Designed by E.F.S. Approved by *Ed. Smith*

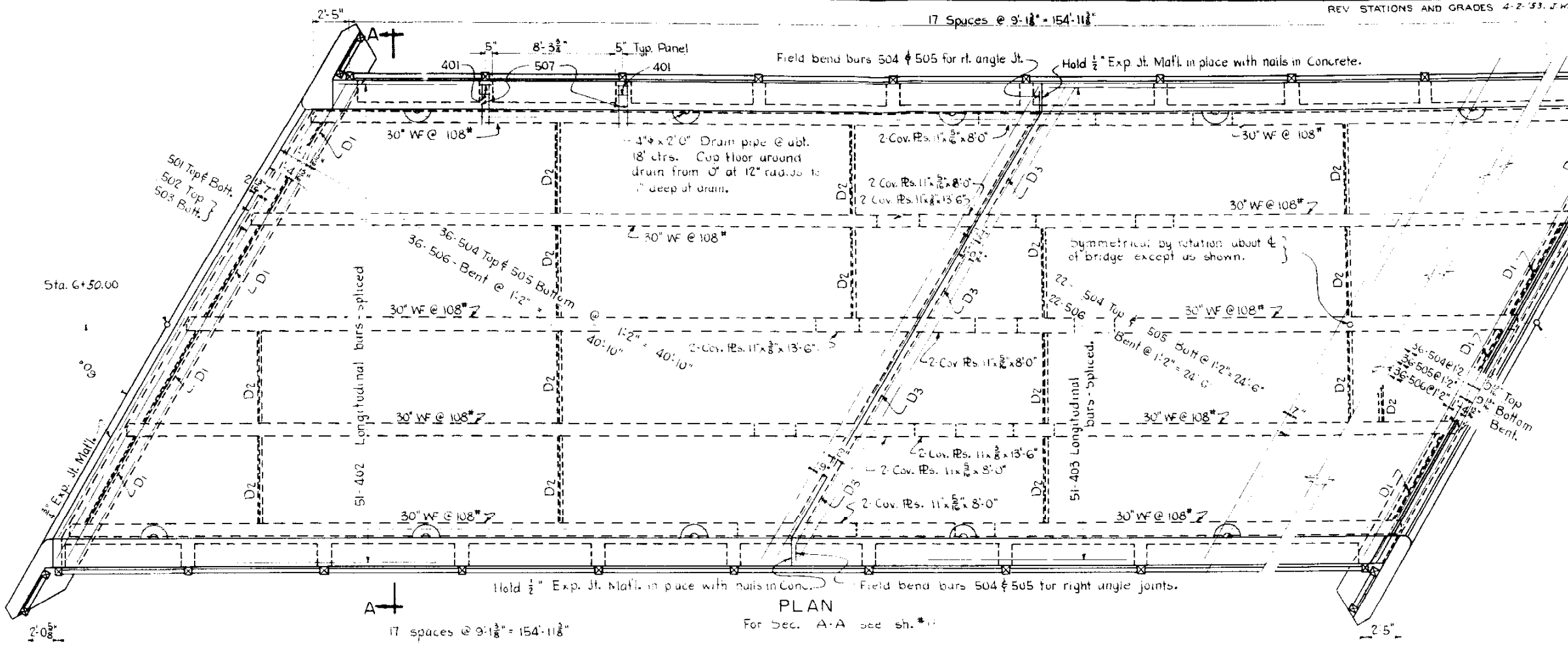
Made by E.F.S. Bridge Engineer

Checked by *Ed. Smith* Date: 6-30-1958

REVISIONS

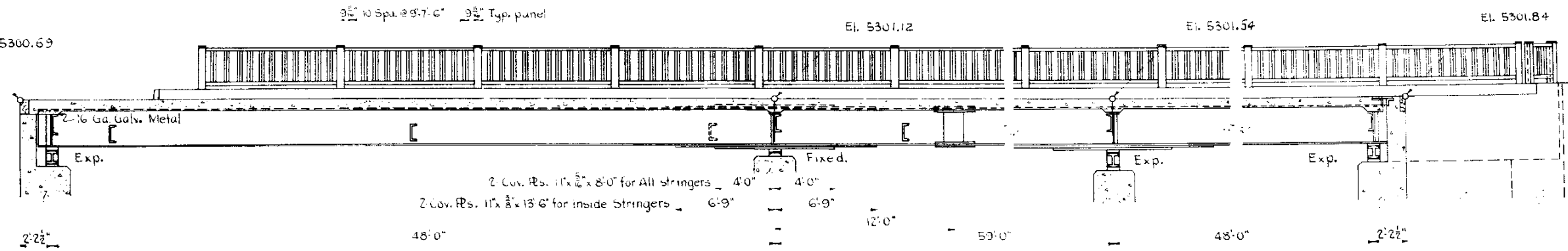
REV STATIONS AND GRADES 4-2-53, J.W.B.

FED. ROAD DIST. NO.	STATE	Proj No.	SHEET NO.	TOTAL SHEETS
3	COLO.	F-FG 001-1(4)	10	

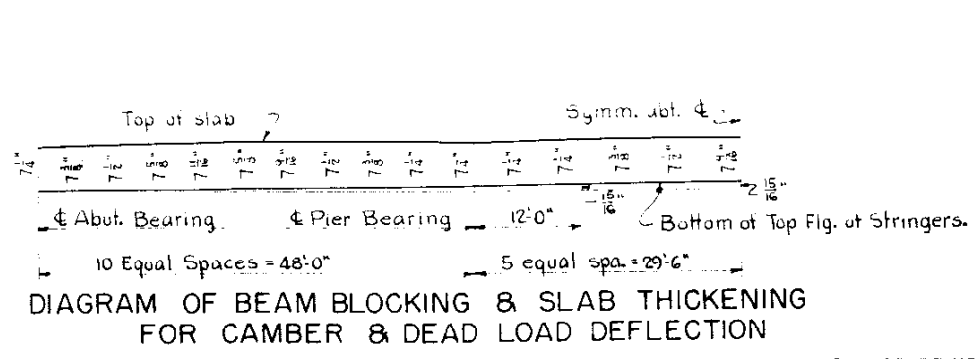
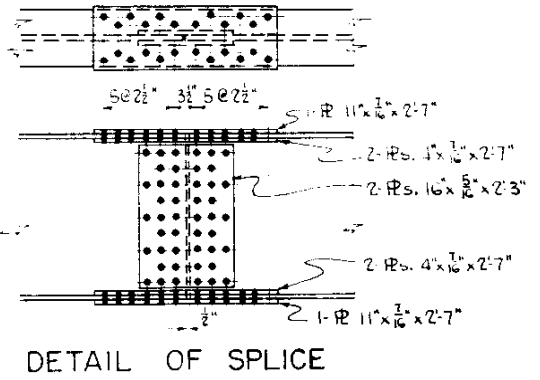
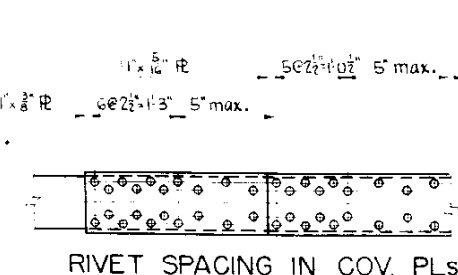


PLAN
For Sec. A-A see sh. #1

CUBIC YARDS CONCRETE	
SPAN N ^o 1	43
SPAN N ^o 2	50
SPAN N ^o 3	42
TOTAL	1350



LONGITUDINAL SECTION ON CENTERLINE OF BRIDGE



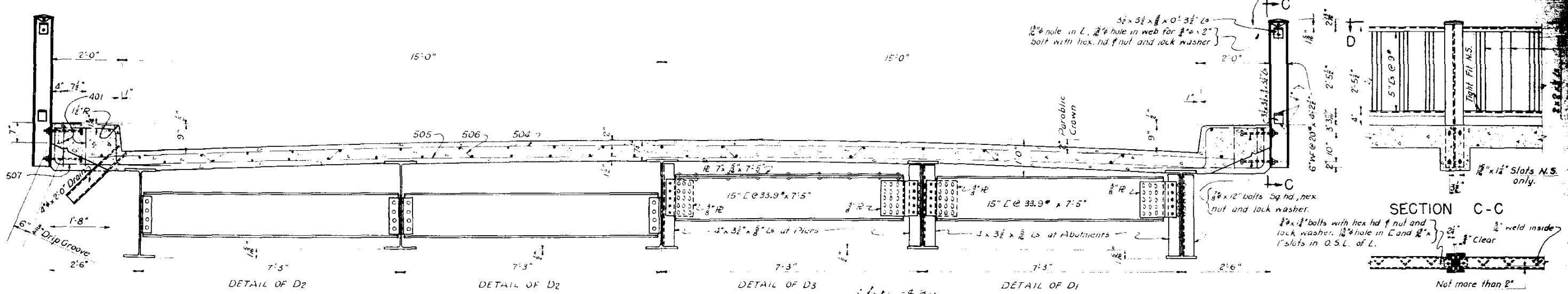
COLORADO
STATE HIGHWAY DEPARTMENT
3 SPANS (48'-5 1/2" x 48') CONTINUOUS
CONCRETE & I-BEAM BRIDGE
30' CLEAR ROW. 60° SKEW.
DETAILS OF SUPERSTRUCTURE.
Across Rifle Creek
Sta. 6+0.00 to 8+09.42
Near Rifle Sec 16 T 6 S R 45 W
Designed by EFS. Approved by G. J. Reilly
Made by EFS. Bridge Engineer
Checked by Date 6-30-1952.

STRUCTURE NO. F-5-C

REVISIONS

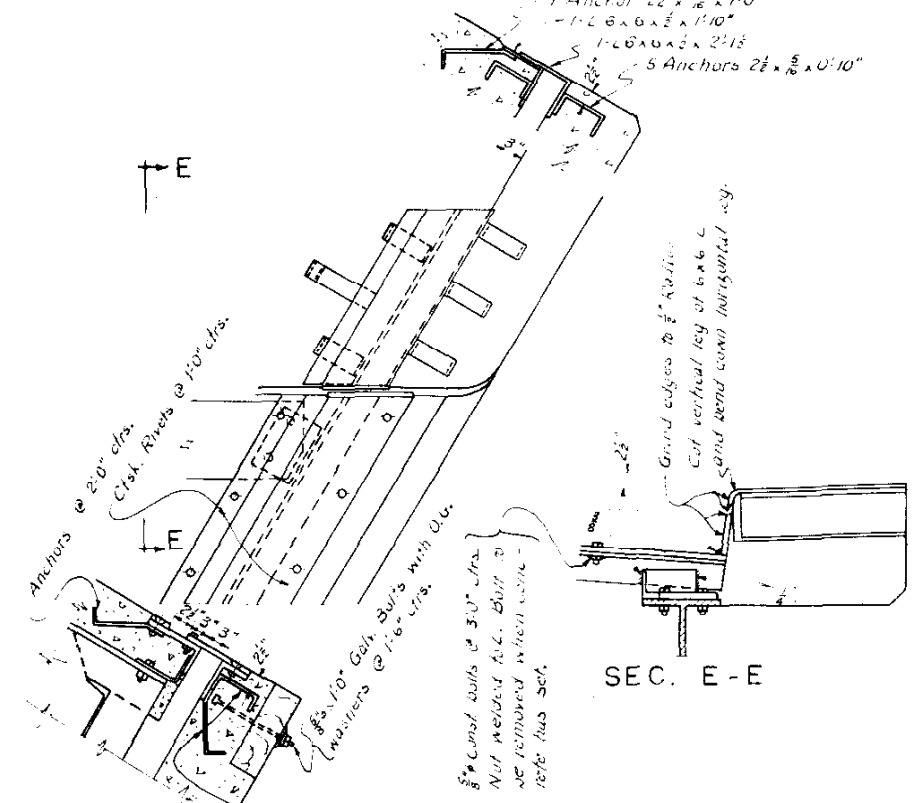
REV. STATIONS AND GRADES - 4-2-53 J.W.B.
 1/2" hole thru web of post for 3/4" x 1/2" bolt with hex. hd. nut & lock washer

FED. ROAD DIST. NO.	STATE	Proj. No.	SHEET NO.
3	COLO.	F-FG 001-1(4)	11



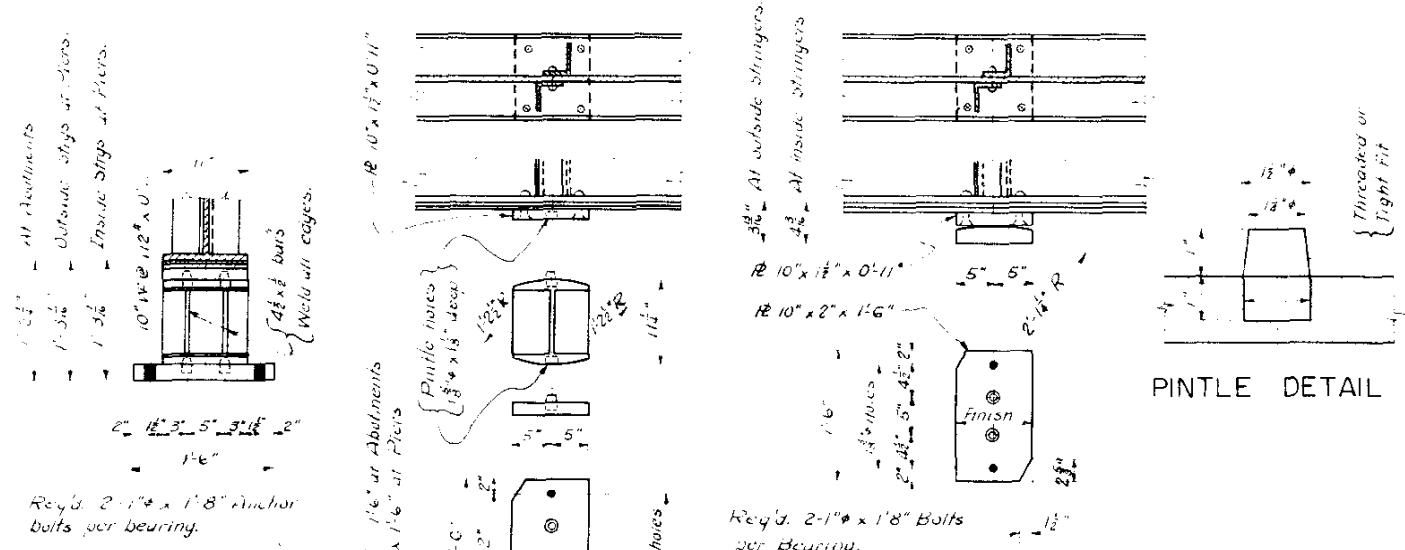
SECTION A-A

VIEW D-D



DETAIL OF EXP. DEVICE, One Req'd.

- STEEL REQUIRED
- 1- Bar 3" x 1/2" x 34'-7 1/2"
 - 1-R 10" x 3/4" x 34'-7 1/2"
 - 1-R 6" x 3/4" x 0'-11 1/2"
 - 1-L 8" x 4" x 34'-7 1/2"
 - 1-L 6" x 4" x 34'-7 1/2"
 - 5- L 5" x 4" x 1/2" x 0'-8 1/2"
 - 36 Anchor Bars 2 1/2" x 3/4" x 1'-0" (No paint on anchors)

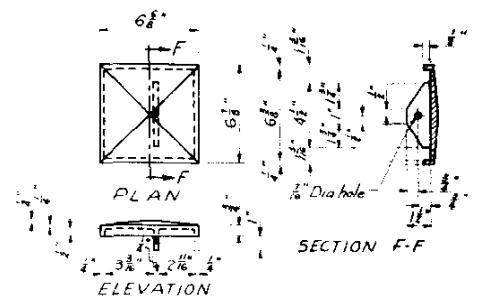


DETAIL OF EXPANSION BEARING

10 Req'd. at Abutments.
 5 Req'd. at Piers.

DETAIL OF FIXED BEARING

5-Req'd.



DETAILS OF CAST IRON CAP

COLORADO STATE HIGHWAY DEPARTMENT
 3 SPANS (48'-59'-48") CONTINUOUS
 CONCRETE & I BEAM BRIDGE
 30' CLEAR ROADWAY 60' SKEW
 DETAILS OF SUPERSTRUCTURE
 Across Rifle Creek
 Sta. 6+50.00 to 8+00.00
 Near Rifle, Sec. 16, T. 6 S., R. 6 E.

Designed by EFS Approved by G.S.
 Made by EFS Bridge Engineer
 Checked by Date: 6

REVISIONS

REV. STATIONS AND GRADES 4-2-53-273

FED. ROAD DIST. NO.	STATE	PROJECT NO.	SHEET NO.	TOTAL SHEETS
9	COLO.	FFC001(4)	12	

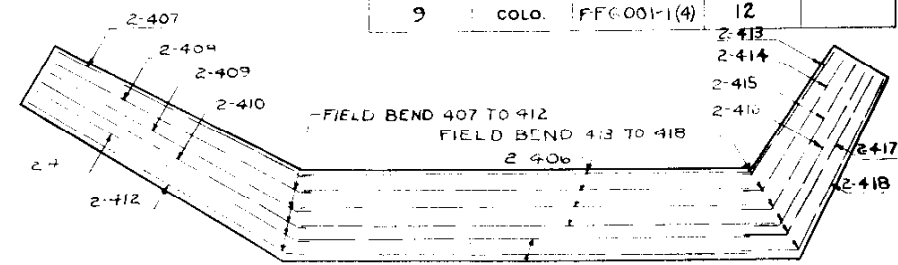
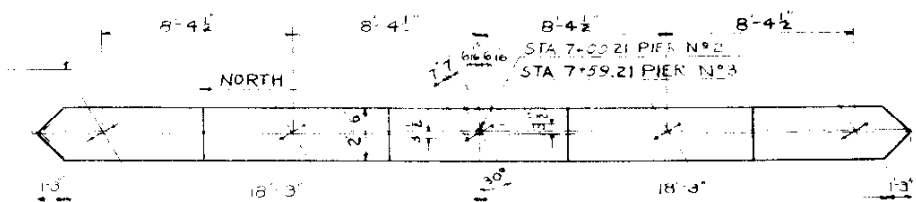
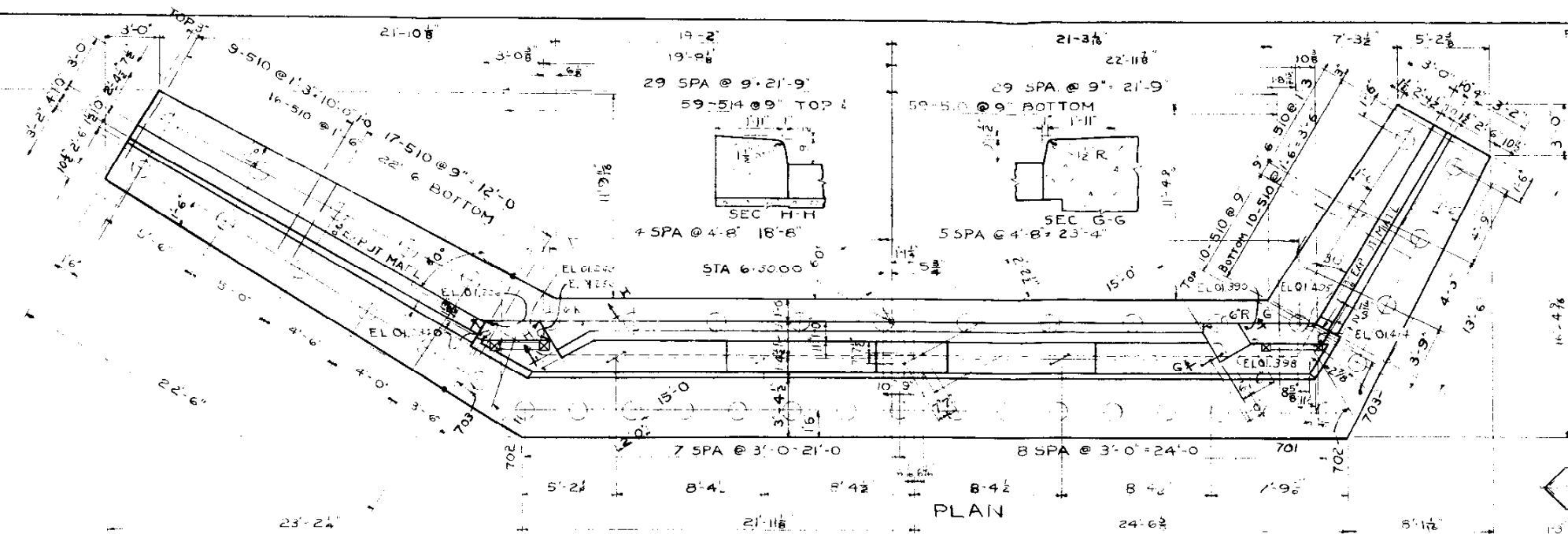


DIAGRAM OF LONGITUDINAL FOOTING BARS

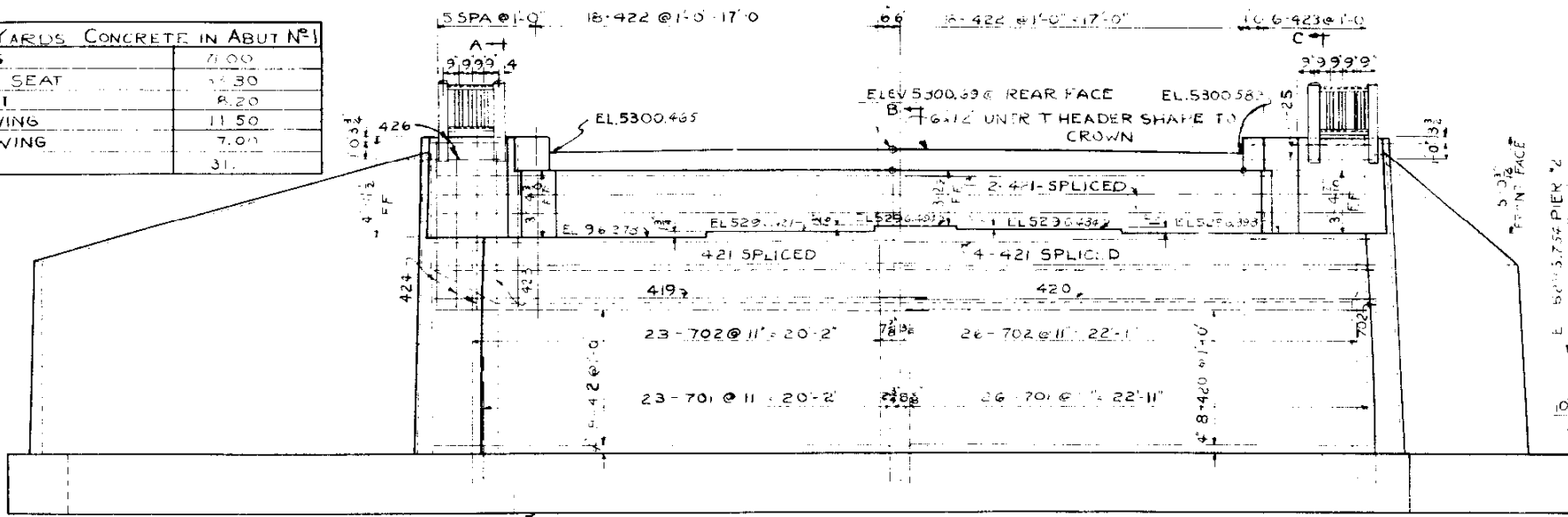
CUBIC YARDS CONCRETE IN PIERS	
PIER N° 2	51
PIER N° 3	51



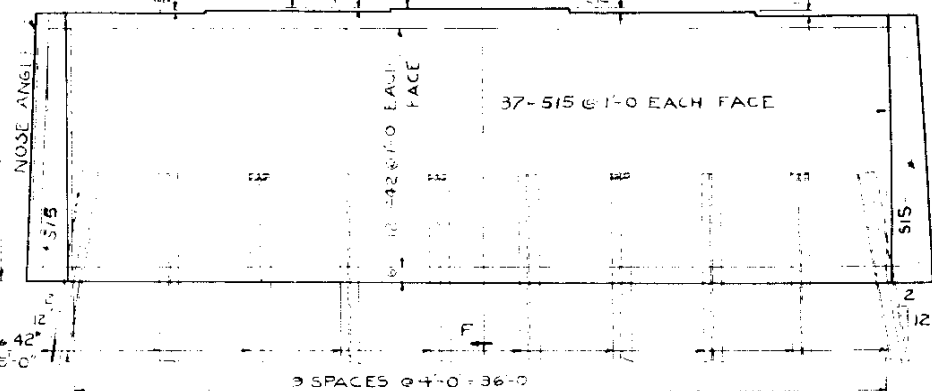
PLAN OF TOP OF PIERS



CUBIC YARDS CONCRETE IN ABUT N° 1	
FOOTING	7.00
BRIDGE SEAT	13.30
PARAPEL	8.20
LONG WING	11.50
SHORT WING	7.00
TOTAL	55.00



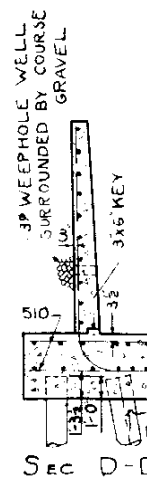
ELEVATION
PILES SHOWN ON PLAN & SECTIONS 20



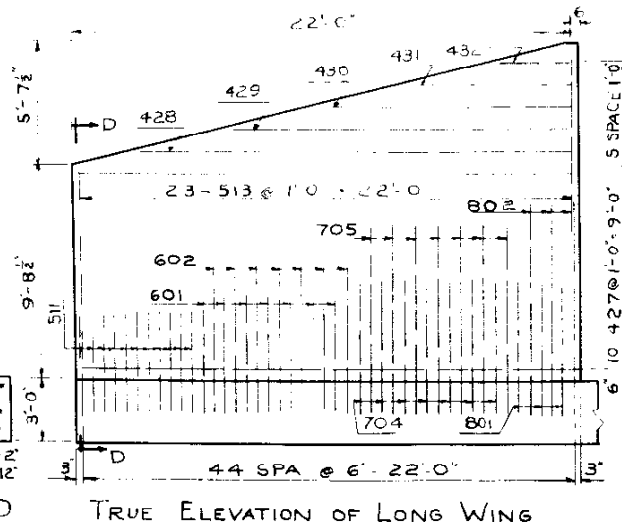
DETAIL OF PIERS N° 2 & 3

MAX PILE LOAD 63,400"
 10-4 SPA @ 2'-0" = 8'-0"
 4 SPA @ 2'-0" = 8'-0"
 EL 5282.234

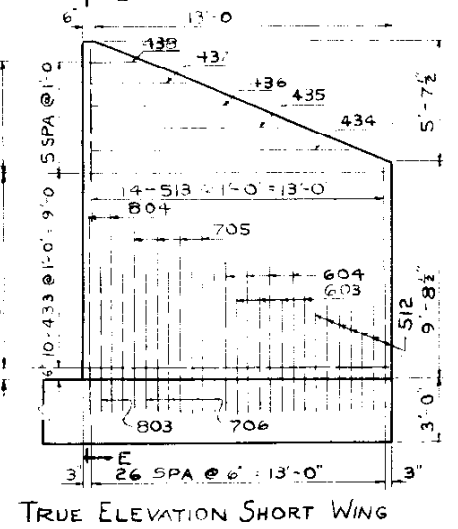
DETAIL OF NOSE ANGLE
2 REQD



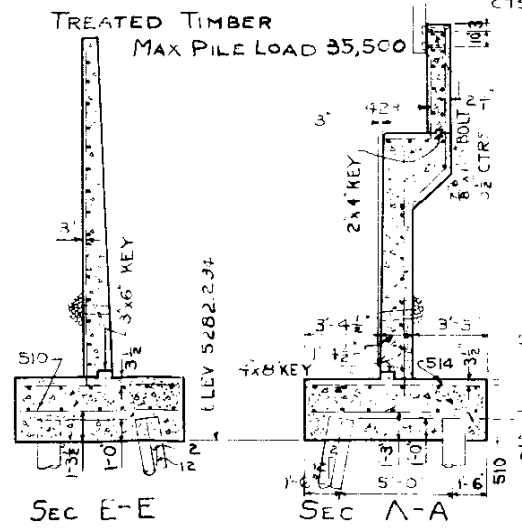
SEC D-D



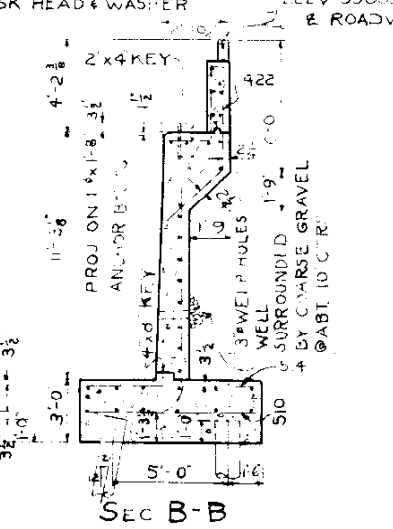
TRUE ELEVATION OF LONG WING



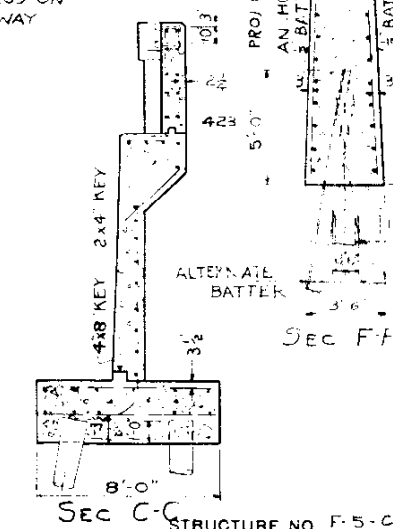
TRUE ELEVATION SHORT WING



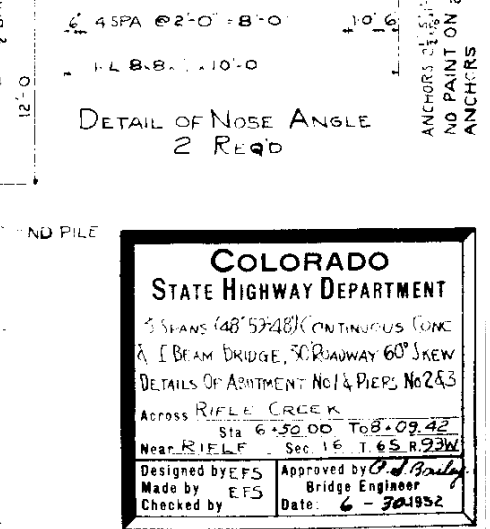
SEC E-E



SEC A-A



SEC B-B



SEC C-C

COLORADO STATE HIGHWAY DEPARTMENT
 3 SPANS (48' 5" x 48') CONTINUOUS CONC & I BEAM BRIDGE, 50' ROADWAY 60' SKEW
 DETAILS OF ABUTMENT NO. 1 & PIERS NO. 2 & 3
 Across RIFLE CREEK
 Sta 6+50.00 To 8+09.42
 Near RIFLE - Sec 16 T. 65. R. 23W.
 Designed by EFS
 Made by EFS
 Checked by
 Approved by *[Signature]*
 Bridge Engineer
 Date: 6-30-52

STRUCTURE NO. F-5-C

REVISIONS

REV STATIONS AND SPACES 4-2-50

FED. ROAD DIST. NO.	STATE	PROJ. NO.	SHEET NO.	TOTAL SHEETS
3	COLO.	F FG 000-1 (4)	13	

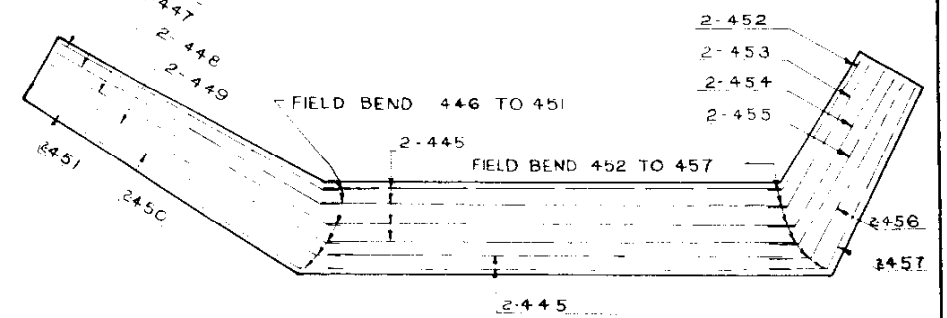
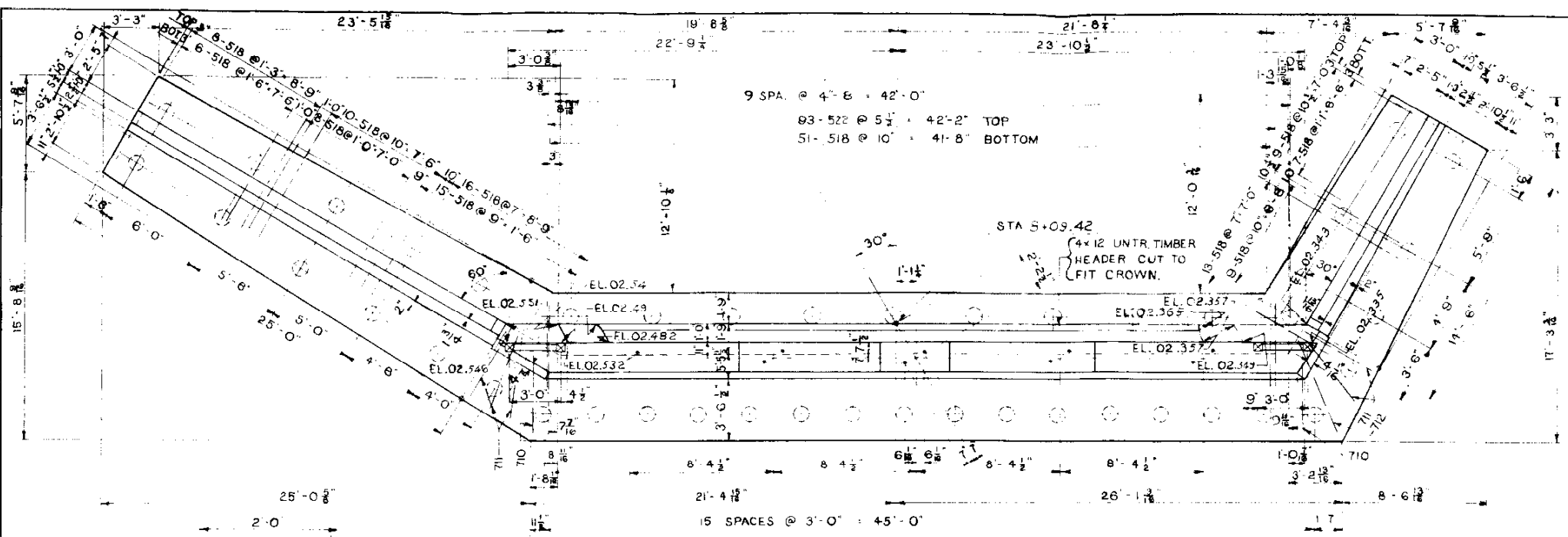
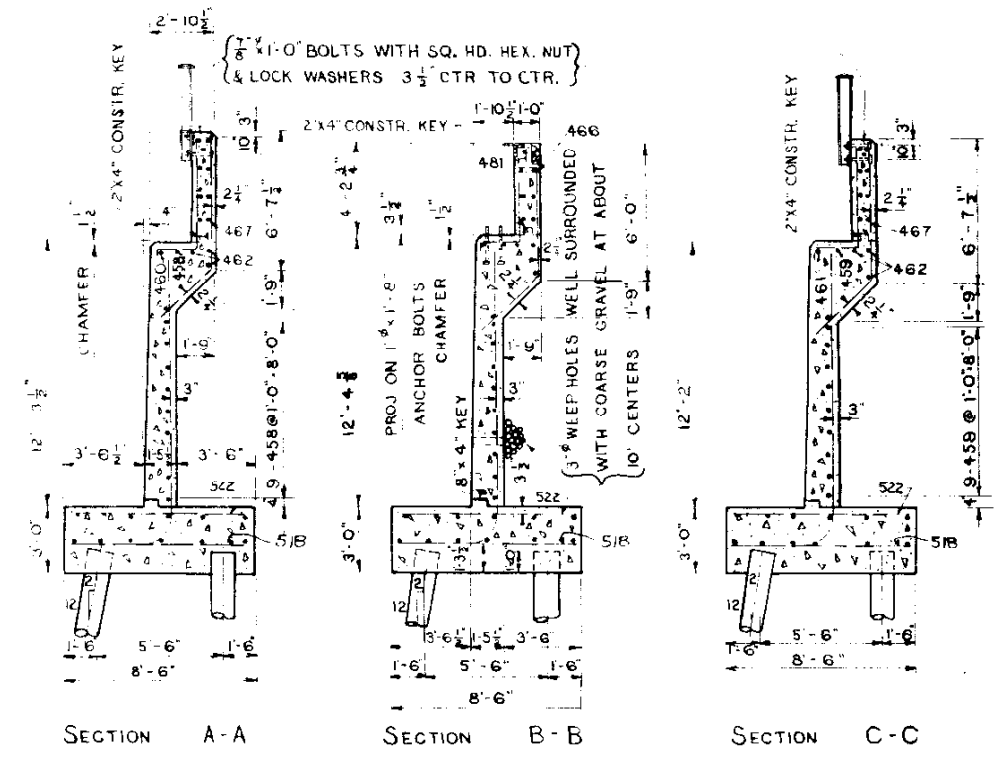
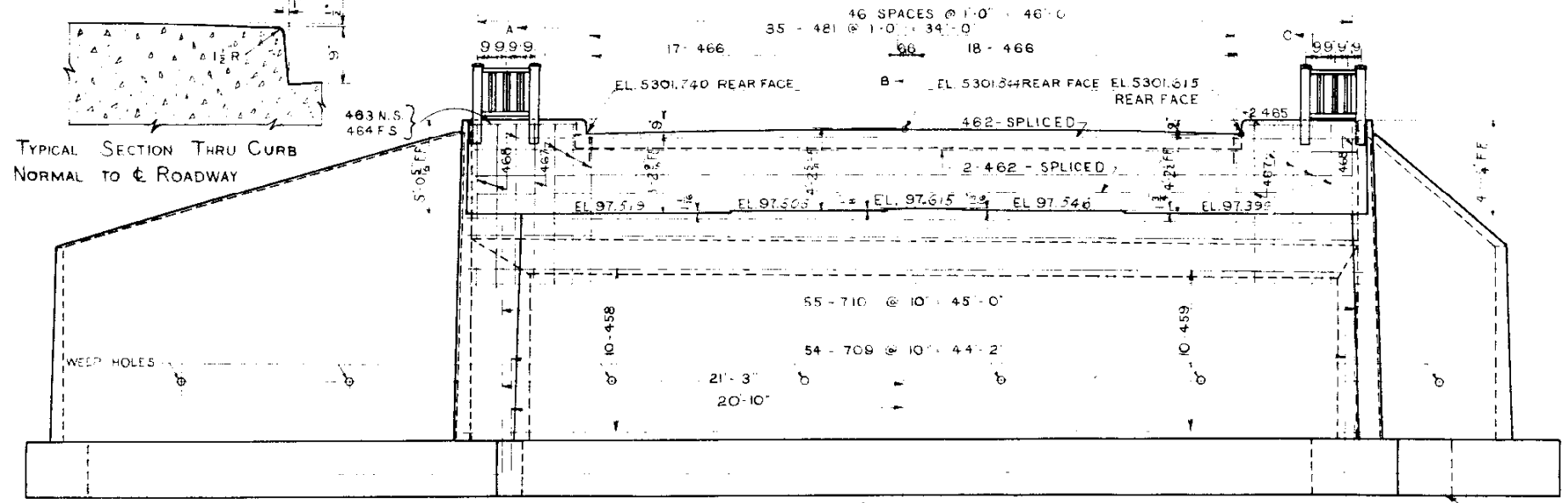
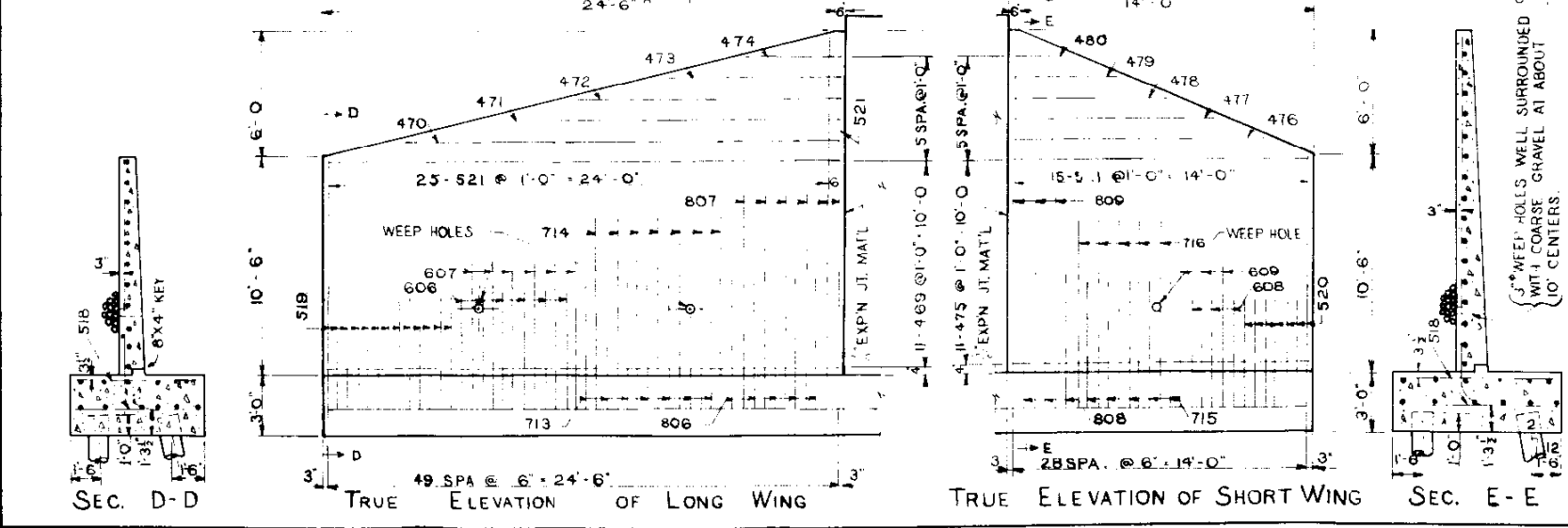


DIAGRAM OF LONGITUDINAL FOOTING BARS



	CUBIC YARDS	CONCRETE
FOOTING		78.60
BRIDGE SEAT		36.30
PARAPET		7.30
LONG WING		14.60
SHORT WING		8.20
TOTAL		145.00

DETAILS OF ABUTMENT NO. 4
 MAX. PILE LOAD 39700 *
 ALL PILES TO BE TREATED TIMBER, 16' LONG



STRUCTURE NO. F5-G

COLORADO STATE HIGHWAY DEPARTMENT
 3 SPANS (48'-59' 48") CONTINUOUS
 CONCRETE & 1 BEAM BRIDGE
 30' CLEAR ROADWAY 60° SKEW
 DETAILS OF ABUTMENT NO. 4
 Across RIFLE CREEK
 Sta 6+30.00 TO 8+09.42
 Near RIFLE Sec. 16 T. 6 S. R. 90 W.
 Designed by E.F.S. Approved by *W. Bailey*
 Made by E.F.S. Bridge Engineer
 Checked by Date: 6-30-1952

As Built

DWG. No. 2199